

Brendan Keogh  
DBFL Consulting Engineers  
Ormond House  
Upper Ormond Quay  
Dublin 7  
Dublin

Uisce Éireann  
Bosca OP 448  
Oifig Sheachadta na  
Cathrach Theas  
Cathair Chorcaí

Irish Water  
PO Box 448,  
South City  
Delivery Office,  
Cork City.

[www.water.ie](http://www.water.ie)

2 December 2021

**Re: Design Submission for Old Bray Road, Cornelscourt, Dublin 18, Co. Dublin (the “Development”)  
(the “Design Submission”) / Connection Reference No: CDS20003703**

Dear Brendan Keogh,

Many thanks for your recent Design Submission.

We have reviewed your proposal for the connection(s) at the Development. Based on the information provided, which included the documents outlined in Appendix A to this letter, Irish Water has no objection to your proposals.

This letter does not constitute an offer, in whole or in part, to provide a connection to any Irish Water infrastructure. Before you can connect to our network you must sign a connection agreement with Irish Water. This can be applied for by completing the connection application form at [www.water.ie/connections](http://www.water.ie/connections). Irish Water’s current charges for water and wastewater connections are set out in the Water Charges Plan as approved by the Commission for Regulation of Utilities (CRU)([https://www.cru.ie/document\\_group/irish-waters-water-charges-plan-2018/](https://www.cru.ie/document_group/irish-waters-water-charges-plan-2018/)).

You the Customer (including any designers/contractors or other related parties appointed by you) is entirely responsible for the design and construction of all water and/or wastewater infrastructure within the Development which is necessary to facilitate connection(s) from the boundary of the Development to Irish Water’s network(s) (the “**Self-Lay Works**”), as reflected in your Design Submission. Acceptance of the Design Submission by Irish Water does not, in any way, render Irish Water liable for any elements of the design and/or construction of the Self-Lay Works.

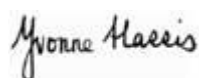
If you have any further questions, please contact your Irish Water representative:

Name: Dario Alvarez

Phone:

Email: [dalvarez@water.ie](mailto:dalvarez@water.ie)

Yours sincerely,



**Yvonne Harris**

## Head of Customer Operations

### Appendix A

#### Document Title & Revision

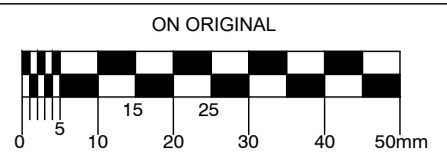
- [180208-DBFL-XX-XX-DR-C-3002 Watermain Layout]
- [180208-DBFL-XX-XX-DR-C-3001 Site Services Layout - Sheet 1]
- [180208-DBFL-XX-XX-DR-C-3004 Site Services Layout - Sheet 2]
- [180208-DBFL-XX-XX-DR-C-3020 Longitudinal Sections Through Foul Sewer]

#### Standard Details/Code of Practice Exemption:

**This Statement of Design Acceptance does not extend to the proposed 825mm diameter interceptor pipe.**

For further information, visit [www.water.ie/connections](http://www.water.ie/connections)

*Notwithstanding any matters listed above, the Customer (including any appointed designers/contractors, etc.) is entirely responsible for the design and construction of the Self-Lay Works. Acceptance of the Design Submission by Irish Water will not, in any way, render Irish Water liable for any elements of the design and/or construction of the Self-Lay Works.*



- NOTES:**
- GENERAL NOTES:**
1. ALL WORKS SHALL BE CONSTRUCTED IN ACCORDANCE WITH THE WORKS REQUIREMENTS.
  2. ALL DIMENSIONS IN METRES UNLESS SPECIFIED OTHERWISE.
  3. ALL CO-ORDINATES ARE TO IRISH TRANSVERSE MERCATOR.
  4. ALL LEVELS ARE TO ORDNANCE DATUM (M.A.S.L.).
  5. ALL TEMPORARY TRAFFIC & OPERATIONS MANAGEMENT SHALL COMPLY FULLY WITH THE WORKS REQUIREMENTS.
  6. THE CONTRACTOR MUST LIAISE DIRECTLY WITH LOCAL AUTHORITY DEPARTMENTS AS DIRECTED IN THE WORKS REQUIREMENTS.
  7. ALL VEHICULAR & PEDESTRIAN, CYCLE & PRIVATE ACCESS ROUTES WITHIN AND SURROUNDING THE WORKS EXTENTS MUST BE MAINTAINED THROUGHOUT THE WORKS IN ACCORDANCE WITH THE CONTRACTORS APPROVED TEMPORARY TRAFFIC & OPERATIONS MANAGEMENT PLAN.

- DRAWING SPECIFIC NOTES:**
1. WATERMAIN INSTALLATION AND ALL WATER SUPPLY WORKS TO BE IN ACCORDANCE WITH THE REQUIREMENTS OF IRISH WATER'S CODE OF PRACTICE FOR WATER SUPPLY AND WATER INFRASTRUCTURE STANDARD DETAILS.
  2. WATERMAIN (AND SERVICE CONNECTIONS) TO BE PE-100 SDR 17 AND CONFORM TO IS EN 12201 (PART 1, PART 2 & PART 3).
  3. AT 90 DEG. TURNS USE 2 No. 45 DEG. BENDS.
  4. COVER TO WATERMAIN TO BE 300mm.
  5. CONNECTION BETWEEN EXISTING AND PROPOSED WATERMANS TO BE CARRIED OUT IN ACCORDANCE WITH IRISH WATER STANDARD DETAILS STD-W-03 TO STD-W-10.
  6. ANCHOR BLOCKS TO BE POSITIONED AT DEAD ENDS, TEES, BENDS AND AT EACH SIDE OF HYDRANTS AND VALVES IN ACCORDANCE WITH THE REQUIREMENTS OF IRISH WATER STANDARD DETAIL STD-W-28 (WATER MAIN THRUST AND SUPPORT BLOCKS).
  7. HYDRANT OUTLET TO BE 200mm BELOW GROUND LEVEL UNLESS REQUESTED OTHERWISE.
  8. WHERE COVER TO PIPE IS LESS THAN 300mm IN GREEN AREAS AND 120mm IN TRAFFICKED AREAS, ENCASE PIPE IN NEW 150mm CONCRETE WITH MOVEMENT JOINTS.
  9. NOTE THAT THE CONTRACTOR IS RESPONSIBLE FOR CONNECTIONS INTO THE BUILDING.
  10. CONNECTION TO INDIVIDUAL HOUSES IN ACCORDANCE WITH IRISH WATER STD-W-03 (1 E 25mm OD PE PIPE).
  11. CONTRACTOR SHALL SATISFY THEMSELVES AS TO THE ACCURACY OF EXISTING SERVICES INFORMATION AND THE LOCATION OF EXISTING SERVICES ON SITE PRIOR TO COMMENCING INSTALLATION OF WATERMANS.
  12. INSTALLATION OF SLUICE VALVES AND HYDRANTS SHALL BE IN ACCORDANCE WITH IRISH WATER'S STANDARD DETAILS STD-W-4 TO STD-W-19.
  13. HYDRANT AND WASH OUT HYDRANT RISER PIPES TO BE DN80 (DOUBLE FLANGED DUCTILE IRON).
  14. MARKER POSTS AND PLATES ARE TO BE PROVIDED IN ACCORDANCE WITH IRISH WATER STANDARD DETAIL STD-W-27.
  15. CONNECTION TO EXISTING WATERMANS TO BE COORDINATED BY THE CONTRACTOR WITH IRISH WATER AND/OR THE LOCAL AUTHORITY.
  16. CONTRACTOR TO LIAISE WITH IRISH WATER AND / OR THE LOCAL AUTHORITY AS REQUIRED REGARDING CLEANSING AND STERILISATION OF WATERMANS.

**LEGEND**

	SITE BOUNDARY
	WATERMAIN
	SLUNG WATERMAIN
	SLUICE VALVES AS PER IRISH WATER STANDARD DETAIL STD-W-14/15
	AIR VALVE AS PER IRISH WATER STANDARD DETAIL STD-W-20/22
	BOUNDARY BOX AND 20mm OD PE80 SERVICE CONNECTION
	HYDRANTS AS PER IRISH WATER STANDARD DETAIL STD-W-16/18
	WASH OUT HYDRANTS AS PER IRISH WATER STANDARD DETAIL STD-W-30A
	SCOUR VALVE AS PER IRISH WATER STANDARD DETAIL STD-W-30
	METER CHAMBER AS PER IRISH WATER STANDARD STD-W-26
	EXISTING WATERMAIN TO BE DECOMMISSIONED
	300Ø W/M
	EXISTING WATERMAIN
	EXISTING SLUICE VALVE
	EXISTING HYDRANT
	BASEMENT FOOTPRINT

**LIST OF IRISH WATER STANDARD DETAILS BROUGHT INTO THE CONTRACT**

STD-W-04	GENERAL PIPE CONNECTIONS (SHEET 1 OF 7)
STD-W-05	GENERAL PIPE CONNECTIONS (SHEET 2 OF 7)
STD-W-06	GENERAL PIPE CONNECTIONS (SHEET 3 OF 7)
STD-W-07	GENERAL PIPE CONNECTIONS (SHEET 4 OF 7)
STD-W-08	GENERAL PIPE CONNECTIONS (SHEET 5 OF 7)
STD-W-09	GENERAL PIPE CONNECTIONS (SHEET 6 OF 7)
STD-W-10	GENERAL PIPE CONNECTIONS (SHEET 7 OF 7)
STD-W-11	TYPICAL SERVICE LAYOUT INDICATING SEPARATION DISTANCES
STD-W-12	RESTRICTIONS ON TREES / SHRUBS PLANTING ADJACENT TO WATERMANS
STD-W-13	TRENCH BACKFILL & BEDDING
STD-W-14	SLUICE VALVE FOR DUCTILE IRON (D.I.) PIPE (<350MM DIA.) (SHEET 1 OF 2)
STD-W-15	SLUICE VALVE FOR POLYETHYLENE (P.E.) PIPE (<350MM DIA.) (SHEET 2 OF 2)
STD-W-16	ON-LINE HYDRANT FOR DUCTILE IRON (D.I.) PIPE (SHEET 1 OF 4)
STD-W-17	OFF-LINE HYDRANT FOR DUCTILE IRON (D.I.) PIPE (SHEET 2 OF 4)
STD-W-18	ON-LINE HYDRANT FOR POLYETHYLENE (P.E.) PIPE (SHEET 3 OF 4)
STD-W-19	OFF-LINE HYDRANT FOR POLYETHYLENE (P.E.) PIPE (SHEET 4 OF 4)
STD-W-20	ON-LINE AIR VALVE FOR DUCTILE IRON (D.I.) PIPE (SHEET 1 OF 4)
STD-W-21	OFF-LINE AIR VALVE FOR DUCTILE IRON (D.I.) PIPE (SHEET 2 OF 4)
STD-W-22	ON-LINE AIR VALVE FOR POLYETHYLENE (P.E.) PIPE (SHEET 3 OF 4)
STD-W-23	OFF-LINE AIR VALVE FOR POLYETHYLENE (P.E.) PIPE (SHEET 4 OF 4)
STD-W-24	PRESSURE REDUCING / SUSTAINING VALVE (P.R.V. / P.S.V.) CHAMBER
STD-W-26	METER CHAMBER (<300MM DIA.)
STD-W-27	MARKER POSTS / PLATES
STD-W-28	WATER MAIN THRUST & SUPPORT BLOCKS
STD-W-30	SCOUR CHAMBER & HEAD WALL ARRANGEMENTS
STD-W-30A	WASHOUT HYDRANT
STD-W-31	TYPICAL DITCH / STREAM CROSSING FOR WATER MAIN

P3	22-11-21	FOR SHD APPLICATION	JVS	BK
P2	23-04-21	FOR PRE-APPLICATION MEETING	JVS	BK
P1	20-09-19	FOR CDS	JVS	BK
REV.	DATE	DESCRIPTION	BY	CHKD.
SUITABILITY	S2	FOR INFORMATION		

**PLANNING**

DESIGNED	BK	PREPARED	DJG
DATE	APR 2019	CHECKED	DJR

**DBFL**

DBFL Consulting Engineers email: info@dbfl.ie site: www.dbfl.ie

DBFL OFFICE: Ormond House, Upper Ormond Quay, Dublin 7, Ireland. PHONE: +353 1 400 4000 FAX: +353 1 400 4050

WATERFORD OFFICE: Unit 2, The Chandery, 1-2 O'Connell Street, Waterford, Ireland. PHONE: +353 51 300 500 FAX: +353 51 844 913

**PROJECT**  
PROPOSED DEVELOPMENT AT CORNELSCOURT

**DRG. TITLE**  
WATERMAIN LAYOUT

**CLIENT**  
CORNEL LIVING LIMITED

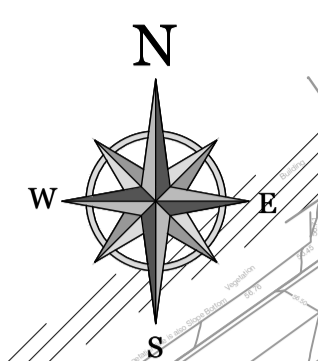
**SCALE**  
1:500 @A1

**FILE REF.**  
180208-DBFL-XX-XX-DR-C-3002

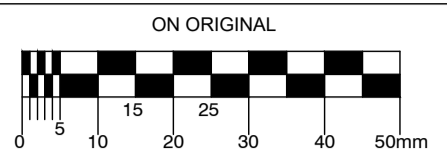
**DRG. NO.**  
180208-DBFL-XX-XX-DR-C-3002

**P3**

ORDNANCE SURVEY IRELAND LICENCE  
No EN 0017919  
© ORDNANCE SURVEY IRELAND  
GOVERNMENT OF IRELAND



© COPYRIGHT OF THIS DRAWING IS RESERVED BY DBFL CONSULTING ENGINEERS. NO PART SHALL BE REPRODUCED OR TRANSMITTED WITHOUT THEIR WRITTEN PERMISSION.



NOTES:

- GENERAL NOTES:
1. ALL WORKS SHALL BE CONSTRUCTED IN ACCORDANCE WITH THE CIVIL ENGINEERING SPECIFICATION AND STANDARD CONSTRUCTION DETAILS.
  2. ALL DIMENSIONS IN METRES UNLESS SPECIFIED OTHERWISE.
  3. ALL CO-ORDINATES ARE TO IRISH TRANSVERSE MERCATOR.
  4. ALL LEVELS ARE TO ORDNANCE DATUM (MAIN HEAD).
  5. ALL TEMPORARY TRAFFIC & OPERATIONS MANAGEMENT SHALL COMPLY FULLY WITH THE CIVIL ENGINEERING SPECIFICATION AND STANDARD CONSTRUCTION DETAILS.
  6. THE CONTRACTOR MUST LIAISE DIRECTLY WITH LOCAL AUTHORITY DEPARTMENTS AS DIRECTED IN THE CIVIL ENGINEERING SPECIFICATION AND STANDARD CONSTRUCTION DETAILS.
  7. ALL VEHICULAR & PEDESTRIAN, CYCLE & PRIVATE ACCESS ROUTES WITHIN AND SURROUNDING THE WORKS EXTENTS MUST BE MAINTAINED THROUGHOUT THE WORKS IN ACCORDANCE WITH THE CONTRACTORS APPROVED TEMPORARY TRAFFIC MANAGEMENT PLAN & CONSTRUCTION MANAGEMENT PLAN.

DRAWING SPECIFIC NOTES:

1. ALL DRAWINGS TO BE CHECKED BY CONTRACTOR ON SITE AND ENGINEER INFORMED OF DISCREPANCIES BEFORE WORK COMMENCES.
2. CONTRACTOR SHALL SATISFY HIMSELF AS TO THE ACCURACY OF EXISTING DRAINAGE LEVELS & THE LOCATION OF EXISTING SERVICES ON SITE PRIOR TO COMMENCEMENT OF WORKS ON SITE.
3. ALL WORKS TO BE CONSTRUCTED IN ACCORDANCE WITH THE AREA SPECIFICATION FOR ROAD WORKS UNLESS NOTED OTHERWISE.
4. MANHOLE COVER LEVELS ARE TO CONFORM WITH FINISHED ROAD AND PATH LEVELS.
5. ALL SURFACE WATER DRAINAGE WORKS TO BE IN ACCORDANCE WITH THE REQUIREMENTS OF THE LOCAL AUTHORITY'S CODE OF PRACTICE FOR DRAINAGE AND THE GBSSS.
6. ALL FOUL DRAINAGE WORKS TO BE IN ACCORDANCE WITH IRISH WATER'S CODE OF PRACTICE FOR WASTEWATER SUPPLY AND WASTEWATER INFRASTRUCTURE STANDARD DETAILS.
7. FOUL SEWERS TO BE CONCRETE PIPES (SPIGOT AND SOCKET JOINTS) AND RUBBER RING FITTINGS COMPLYING WITH IS EN 1910 OR THERMOPLASTIC STRUCTURED WALL PIPES (COMPLYING WITH THE PROVISION OF IS EN 13476 AND WIS 135-01 2000) AND COMPLY WITH THE REQUIREMENTS OF THE IRISH WATER CODE OF PRACTICE.
8. ALL SURFACE WATER SEWERS TO BE CLASS H CONCRETE TO EN 1916 & IS 6 2004.
9. SURFACE WATER COLLECTOR DRAINS 150mm DIA.
10. FOUL HOUSE CONNECTIONS TO BE 100mm DIA.
11. CONTRACTOR SHALL INSPECT THE ROUTE & CONFIRM LOCATIONS OF ALL TREES, FEATURES, ENTRANCES & ASPECTS IMPACTING CONSTRUCTION OF THE WORKS.
12. NOTE THAT THE CONTRACTOR AND/OR ARCHITECT ARE RESPONSIBLE FOR CONNECTIONS INTO THE BUILDING.
13. THIS DRAWING IS BASED ON TOPO SURVEY BY DAVIDSON HICKEY IN OCT 2019 AND APEX SURVEYS IN JAN 2020.

LEGEND

- SITE BOUNDARY
- PROPOSED SURFACE WATER SEWER
- INFILTRATION TRENCH / FILTER DRAIN (TO REAR OF HOUSES ALONG EASTERN BOUNDARY)
- FILTER DRAIN AT EDGE OF PATH / SHARED SURFACE
- ROAD GULLY AND 1500 COLLECTOR PIPE
- GULLY WITH 150mm LEAD PIPE (DRAINING VIA TREPIT)
- PROPOSED ACO CHANNEL
- SURFACE WATER ATTENUATION TANK
- EXISTING SURFACE WATER SEWER
- EXISTING FOUL WATER SEWER
- EXISTING FOUL WATER SEWER
- EXISTING COMBINED SEWER
- ENTRANCE DOOR
- 99.99 EXISTING LEVEL
- 99.999 PROPOSED LEVEL
- 99.999 FINISHED FLOOR LEVEL
- BASEMENT FOOTPRINT

P3	22-11-21	FOR SHD APPLICATION	JVS	BK
P2	23-04-21	FOR PRE-APPLICATION MEETING	JVS	BK
P1	20/09/19	FOR CDS	JVS	BK
REV	DATE	DESCRIPTION	BY	CHKD
SUITABILITY	S2	FOR INFORMATION		

PLANNING			
DESIGNED	BK	PREPARED	PJC
DATE	JAN 2019	CHECKED	DJR

**DBFL**

DBFL Consulting Engineers email: info@dbfl.ie site: www.dbfl.ie

WATERFORD OFFICE: Upper Ormond Quay, Dublin 7, Ireland. Phone: +353 1 400 4000 Fax: +353 1 400 4050

WATERFORD OFFICE Unit 2, The Chandery, 1-2 O'Connell Street, Waterford, Ireland. Phone: +353 51 309 500 Fax: +353 51 844 913

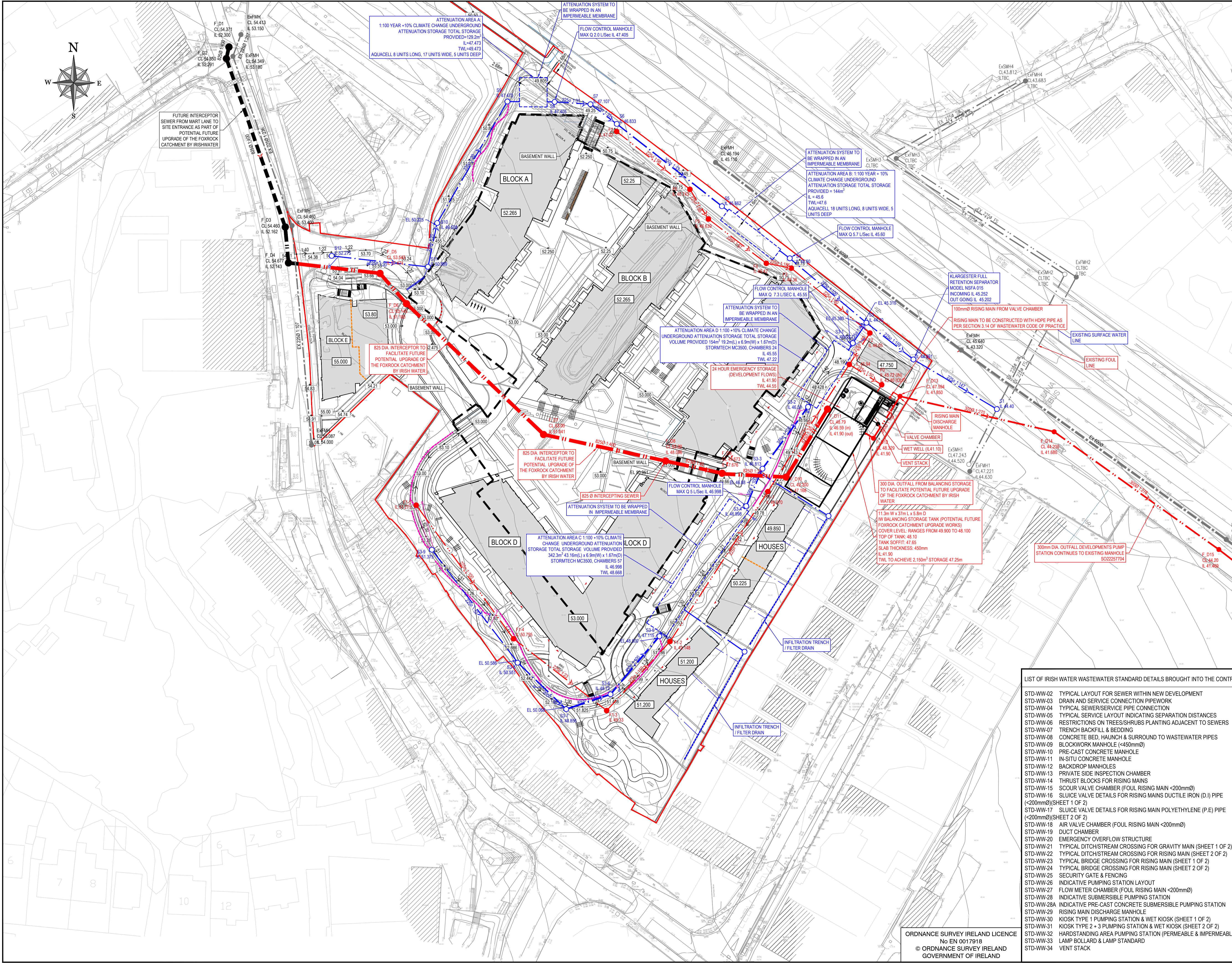
PROJECT: **PROPOSED DEVELOPMENT AT CORNELSCOURT**

DRG TITLE: **SITE SERVICES LAYOUT - SHEET 1**

CLIENT: **CORNEL LIVING LIMITED**

SCALE: 1:500 @A1 FILE REF: 180208-DBFL-XX-XX-DR-C-3001

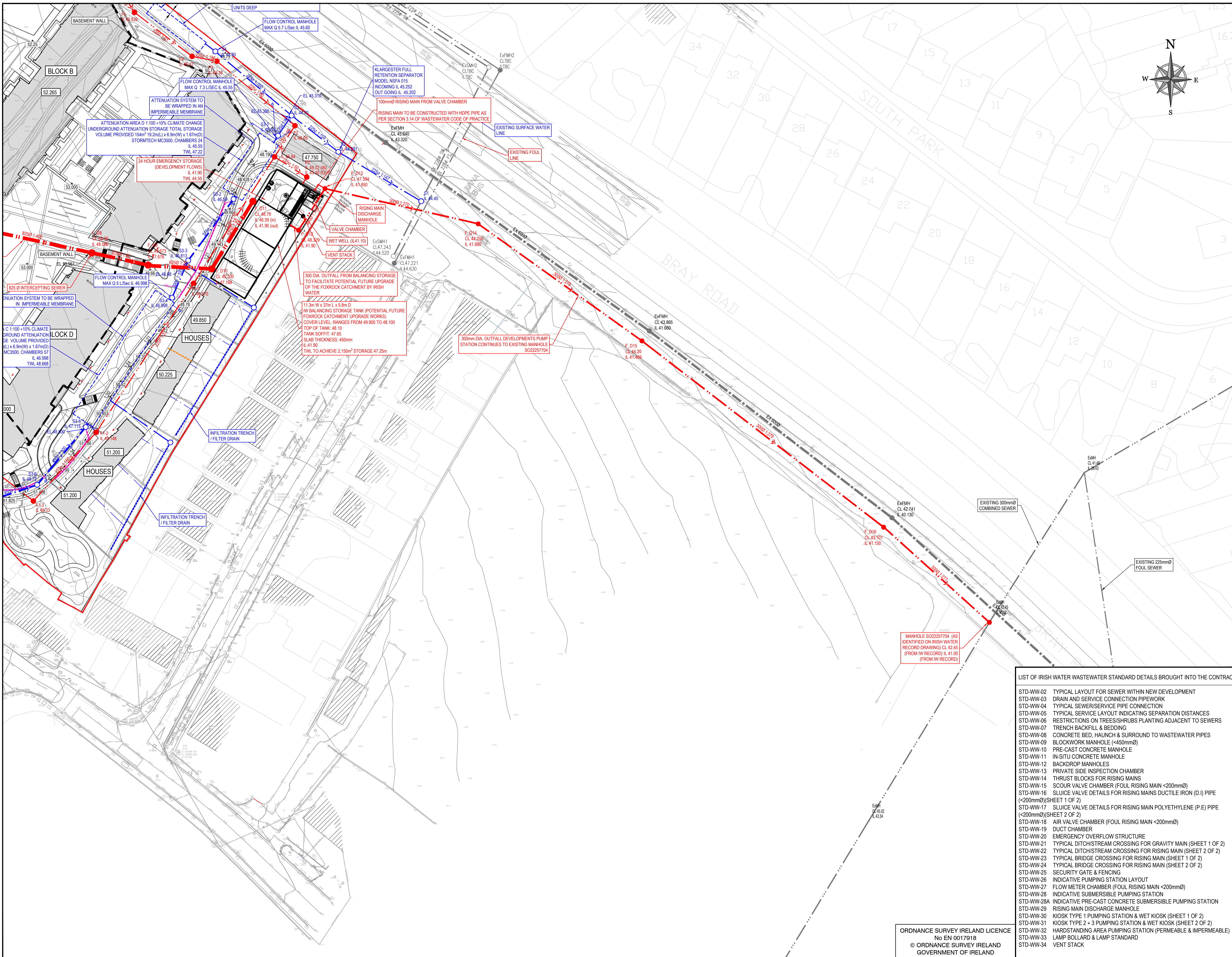
DRG NO: 180208-DBFL-XX-XX-DR-C-3001 P3



LIST OF IRISH WATER WASTEWATER STANDARD DETAILS BROUGHT INTO THE CONTRACT

STD-WW-02	TYPICAL LAYOUT FOR SEWER WITHIN NEW DEVELOPMENT
STD-WW-03	DRAIN AND SERVICE CONNECTION PIPEWORK
STD-WW-04	TYPICAL SEWER/SERVICE PIPE CONNECTION
STD-WW-05	TYPICAL SERVICE LAYOUT INDICATING SEPARATION DISTANCES
STD-WW-06	RESTRICTIONS ON TREES/SHRUBS PLANTING ADJACENT TO SEWERS
STD-WW-07	TRENCH BACKFILL & BEDDING
STD-WW-08	CONCRETE BED, HAUNCH & SURROUND TO WASTEWATER PIPES
STD-WW-09	BLOCKWORK MANHOLE (<450mmØ)
STD-WW-10	PRE-CAST CONCRETE MANHOLE
STD-WW-11	IN-SITU CONCRETE MANHOLE
STD-WW-12	BACKDROP MANHOLES
STD-WW-13	PRIVATE SIDE INSPECTION CHAMBER
STD-WW-14	THRUST BLOCKS FOR RISING MAINS
STD-WW-15	SCOUR VALVE CHAMBER (FOUL RISING MAIN <200mmØ)
STD-WW-16	SLUICE VALVE DETAILS FOR RISING MAINS DUCTILE IRON (D.I.) PIPE (<200mmØ)(SHEET 1 OF 2)
STD-WW-17	SLUICE VALVE DETAILS FOR RISING MAIN POLYETHYLENE (P.E.) PIPE (<200mmØ)(SHEET 2 OF 2)
STD-WW-18	AIR VALVE CHAMBER (FOUL RISING MAIN <200mmØ)
STD-WW-19	DUCT CHAMBER
STD-WW-20	EMERGENCY OVERFLOW STRUCTURE
STD-WW-21	TYPICAL DITCH/STREAM CROSSING FOR GRAVITY MAIN (SHEET 1 OF 2)
STD-WW-22	TYPICAL DITCH/STREAM CROSSING FOR RISING MAIN (SHEET 2 OF 2)
STD-WW-23	TYPICAL BRIDGE CROSSING FOR RISING MAIN (SHEET 1 OF 2)
STD-WW-24	TYPICAL BRIDGE CROSSING FOR RISING MAIN (SHEET 2 OF 2)
STD-WW-25	SECURITY GATE & FENCING
STD-WW-26	INDICATIVE PUMPING STATION LAYOUT
STD-WW-27	FLOW METER CHAMBER (FOUL RISING MAIN <200mmØ)
STD-WW-28	INDICATIVE SUBMERSIBLE PUMPING STATION
STD-WW-28A	INDICATIVE PRE-CAST CONCRETE SUBMERSIBLE PUMPING STATION
STD-WW-29	RISING MAIN DISCHARGE MANHOLE
STD-WW-30	KIOSK TYPE 1 PUMPING STATION & WET KIOSK (SHEET 1 OF 2)
STD-WW-31	KIOSK TYPE 2 + 3 PUMPING STATION & WET KIOSK (SHEET 2 OF 2)
STD-WW-32	HARDSTANDING AREA PUMPING STATION (PERMEABLE & IMPERMEABLE)
STD-WW-33	LAMP BOLLARD & LAMP STANDARD
STD-WW-34	VENT STACK

ORDNANCE SURVEY IRELAND LICENCE No EN 0017918 © ORDNANCE SURVEY IRELAND GOVERNMENT OF IRELAND



© COPYRIGHT OF THIS DRAWING IS RESERVED BY DBFL CONSULTING ENGINEERS. NO PART SHALL BE REPRODUCED OR TRANSMITTED WITHOUT THEIR WRITTEN PERMISSION.

ON ORIGINAL

GENERAL NOTES:

- ALL WORKS SHALL BE CONSTRUCTED IN ACCORDANCE WITH THE CIVIL ENGINEERING SPECIFICATION AND STANDARD CONSTRUCTION DETAILS.
- ALL DIMENSIONS IN METRES UNLESS SPECIFIED OTHERWISE.
- ALL CO-ORDINATES ARE TO IRISH TRANSVERSE MERCATOR.
- ALL LEVELS ARE TO ORDNANCE DATUM (MAIN HEAD).
- ALL TEMPORARY TRAFFIC & OPERATIONS MANAGEMENT SHALL COMPLY FULLY WITH THE CIVIL ENGINEERING SPECIFICATION AND STANDARD CONSTRUCTION DETAILS.
- THE CONTRACTOR MUST LIAISE DIRECTLY WITH LOCAL AUTHORITY DEPARTMENTS AS DIRECTED IN THE CIVIL ENGINEERING SPECIFICATION AND STANDARD CONSTRUCTION DETAILS.
- ALL VEHICULAR & PEDESTRIAN, CYCLE & PRIVATE ACCESS ROUTES WITHIN AND SURROUNDING THE WORKS EXTENTS MUST BE MAINTAINED THROUGHOUT THE WORKS IN ACCORDANCE WITH THE CONTRACTORS APPROVED TEMPORARY TRAFFIC MANAGEMENT PLAN & CONSTRUCTION MANAGEMENT PLAN.

DRAWING SPECIFIC NOTES:

- ALL DRAWINGS TO BE CHECKED BY CONTRACTOR ON SITE AND ENGINEER INFORMED OF DISCREPANCIES BEFORE WORK COMMENCES.
- CONTRACTOR SHALL SATISFY HIMSELF AS TO THE ACCURACY OF EXISTING DRAINAGE LEVELS & THE LOCATION OF EXISTING SERVICES ON SITE PRIOR TO COMMENCEMENT OF WORKS ON SITE.
- ALL WORKS TO BE CONSTRUCTED IN ACCORDANCE WITH THE IWA SPECIFICATION FOR ROAD WORKS UNLESS NOTED OTHERWISE.
- MANHOLE COVER LEVELS ARE TO CONFORM WITH FINISHED ROAD AND PATH LEVELS.
- ALL SURFACE WATER DRAINAGE WORKS TO BE IN ACCORDANCE WITH THE REQUIREMENTS OF THE LOCAL AUTHORITY'S CODE OF PRACTICE FOR DRAINAGE AND THE CODES.
- ALL FOUL DRAINAGE WORKS TO BE IN ACCORDANCE WITH IRISH WATERS CODE OF PRACTICE FOR WASTEWATER SUPPLY AND WASTE WATER INFRASTRUCTURE STANDARD DETAILS.
- FOUL SEWERS TO BE CONCRETE PIPES (SPIGOT AND SOCKET JOINTS) AND RUBBER RING FITTINGS COMPLYING WITH IS EN 1910 OR THERMOPLASTIC STRUCTURED WALL PIPES (COMPLYING WITH THE PROVISION OF IS EN 13476 AND WIS 4-35-01 2000) AND COMPLY WITH THE REQUIREMENTS OF THE IRISH WATER CODE OF PRACTICE.
- ALL SURFACE WATER SEWERS TO BE CLASS H CONCRETE TO EN 1916 & IS 6 2004.
- SURFACE WATER COLLECTOR DRAINS 150mm DIA.
- FOUL HOUSE CONNECTIONS TO BE 100mm DIA.
- CONTRACTOR SHALL INSPECT THE ROUTE & CONFIRM LOCATIONS OF ALL TREES, STRUCTURED WALLS & ASPECTS IMPACTING CONSTRUCTION OF THE WORKS.
- NOTE THAT THE CONTRACTOR AND/OR ARCHITECT ARE RESPONSIBLE FOR CONNECTIONS INTO THE BUILDING.
- THIS DRAWING IS BASED ON TOPO SURVEY BY DAVIDSON HICKEY IN OCT 2019 AND APEX SURVEYS IN JAN 2020.

LEGEND

- SITE BOUNDARY
- PROPOSED SURFACE WATER SEWER
- INFILTRATION TRENCH / FILTER DRAIN (TO REAR OF HOUSES ALONG EASTERN BOUNDARY)
- FILTER DRAIN AT EDGE OF PATH / SHARED SURFACE
- ROAD GULLY AND 1500 COLLECTOR PIPE
- GULLY WITH 150mm LEAD PIPE (DRAINING VIA TREEPIT)
- PROPOSED ACO CHANNEL
- SURFACE WATER ATTENUATION TANK
- EXISTING SURFACE WATER SEWER
- PROPOSED FOUL WATER SEWER
- EXISTING FOUL WATER SEWER
- EXISTING COMBINED SEWER
- ▲ ENTRANCE DOOR
- 99.99 EXISTING LEVEL
- 99.999 PROPOSED LEVEL
- 99.999 FINISHED FLOOR LEVEL
- BASEMENT FOOTPRINT

LIST OF IRISH WATER WASTEWATER STANDARD DETAILS BROUGHT INTO THE CONTRACT

STD-WW-02	TYPICAL LAYOUT FOR SEWER WITHIN NEW DEVELOPMENT
STD-WW-03	DRAIN AND SERVICE CONNECTION PIPEWORK
STD-WW-04	TYPICAL SEWER/SERVICE PIPE CONNECTION
STD-WW-05	TYPICAL SERVICE LAYOUT INDICATING SEPARATION DISTANCES
STD-WW-06	RESTRICTIONS ON TREES/SHRUBS PLANTING ADJACENT TO SEWERS
STD-WW-07	TRENCH BACKFILL & BEDDING
STD-WW-08	CONCRETE BED, HAUNCH & SURROUND TO WASTEWATER PIPES
STD-WW-09	BLOCKWORK MANHOLE (<450mmØ)
STD-WW-10	PRE-CAST CONCRETE MANHOLE
STD-WW-11	IN-SITU CONCRETE MANHOLE
STD-WW-12	BACKDROP MANHOLES
STD-WW-13	PRIVATE SIDE INSPECTION CHAMBER
STD-WW-14	THRUST BLOCKS FOR RISING MAINS
STD-WW-15	SCOUR VALVE CHAMBER (FOUL RISING MAIN <200mmØ)
STD-WW-16	SLUICE VALVE DETAILS FOR RISING MAINS DUCTILE IRON (D.I.) PIPE (<200mmØ)(SHEET 1 OF 2)
STD-WW-17	SLUICE VALVE DETAILS FOR RISING MAIN POLYETHYLENE (P.E) PIPE (<200mmØ)(SHEET 2 OF 2)
STD-WW-18	AIR VALVE CHAMBER (FOUL RISING MAIN <200mmØ)
STD-WW-19	DUCT CHAMBER
STD-WW-20	EMERGENCY OVERFLOW STRUCTURE
STD-WW-21	TYPICAL DITCH/STREAM CROSSING FOR GRAVITY MAIN (SHEET 1 OF 2)
STD-WW-22	TYPICAL DITCH/STREAM CROSSING FOR RISING MAIN (SHEET 2 OF 2)
STD-WW-23	TYPICAL BRIDGE CROSSING FOR RISING MAIN (SHEET 1 OF 2)
STD-WW-24	TYPICAL BRIDGE CROSSING FOR RISING MAIN (SHEET 2 OF 2)
STD-WW-25	SECURITY GATE & FENCING
STD-WW-26	INDICATIVE PUMPING STATION LAYOUT
STD-WW-27	FLOW METER CHAMBER (FOUL RISING MAIN <200mmØ)
STD-WW-28	INDICATIVE SUBMERSIBLE PUMPING STATION
STD-WW-28A	INDICATIVE PRE-CAST CONCRETE SUBMERSIBLE PUMPING STATION
STD-WW-29	RISING MAIN DISCHARGE MANHOLE
STD-WW-30	KIOSK TYPE 1 PUMPING STATION & WET KIOSK (SHEET 1 OF 2)
STD-WW-31	KIOSK TYPE 2 + 3 PUMPING STATION & WET KIOSK (SHEET 2 OF 2)
STD-WW-32	HARDSTANDING AREA PUMPING STATION (PERMEABLE & IMPERMEABLE)
STD-WW-33	LAMP BOLLARD & LAMP STANDARD
STD-WW-34	VENT STACK

ORDNANCE SURVEY IRELAND LICENCE  
No EN 0017918  
© ORDNANCE SURVEY IRELAND  
GOVERNMENT OF IRELAND

P2	22-11-21	FOR SHD APPLICATION	JVS	BK
P1	23-04-21	FOR PRE-APPLICATION MEETING	JVS	BK
REV	DATE	DESCRIPTION	BY	CHKD
SUITABILITY	S2	FOR INFORMATION		

PLANNING			
DESIGNED	BK	PREPARED	PJC
DATE	JAN 2019	CHECKED	DJR

DBFL Consulting Engineers  
Dublin Office: Ormond House, Upper Ormond Quay, Dublin 7, Ireland. Phone: +353 1 400 4000 Fax: +353 1 400 4050  
Waterford Office: Unit 2, The Chandery, 1-2 O'Connell Street, Waterford, Ireland. Phone: +353 51 939 500 Fax: +353 51 844 913  
Email: info@dbfl.ie Site: www.dbfl.ie

PROJECT: PROPOSED DEVELOPMENT AT CORNELSCOURT

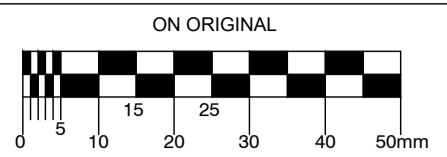
DRG TITLE: SITE SERVICES LAYOUT - SHEET 2

CLIENT: CORNEL LIVING LIMITED

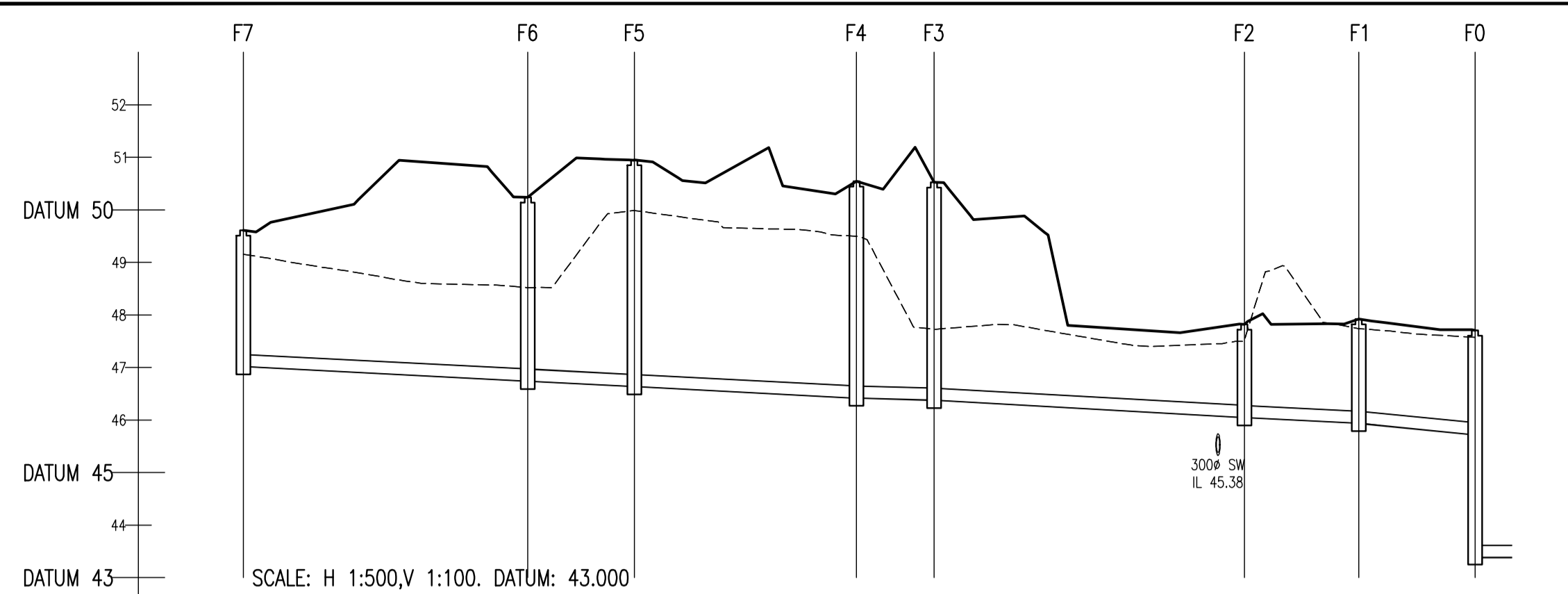
SCALE: 1:500 @A1 FILE REF: 180208-DBFL-XX-XX-DR-C-3001

DRG NO: 180208-DBFL-XX-XX-DR-C-3004 P2

© COPYRIGHT OF THIS DRAWING IS RESERVED BY DBFL CONSULTING ENGINEERS. NO PART SHALL BE REPRODUCED OR TRANSMITTED WITHOUT THEIR WRITTEN PERMISSION.

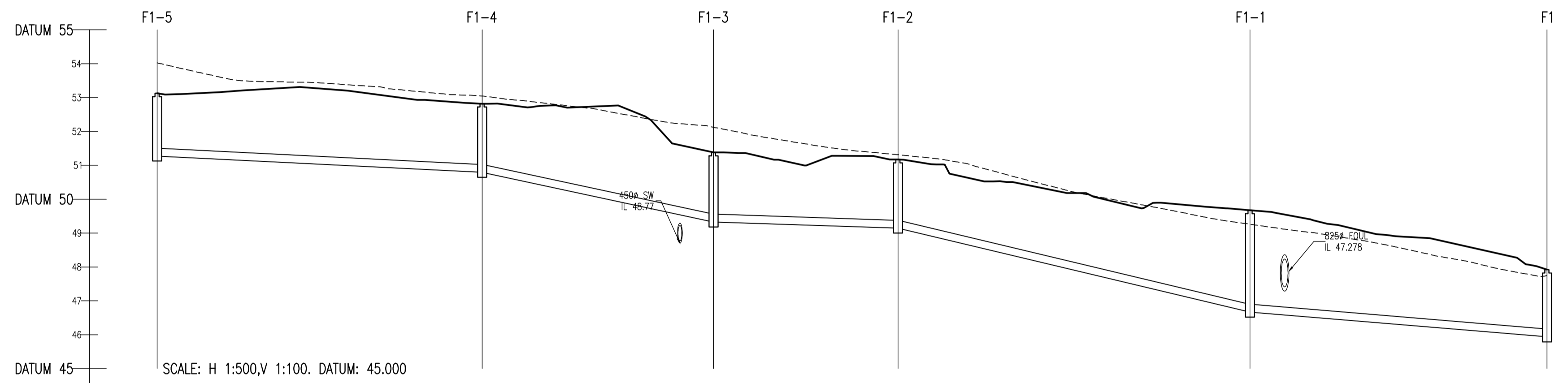


- NOTES:
- ALL DRAWINGS TO BE CHECKED BY CONTRACTOR ON SITE AND ENGINEER INFORMED OF DISCREPANCIES BEFORE WORK COMMENCES
  - ALL LEVELS ARE IN METRES AND ARE RELATED TO ORDNANCE DATUM
  - CONTRACTOR SHALL SATISFY HIMSELF AS TO THE ACCURACY OF PAVEMENT LEVELS ON SITE PRIOR TO COMMENCEMENT OF WORKS ON SITE
  - ALL WORKS TO BE CONSTRUCTED IN ACCORDANCE WITH THE NRA SPECIFICATION FOR ROAD WORKS UNLESS NOTED OTHERWISE
  - THIS DRAWING IS FOR PLANNING PURPOSES ONLY
  - MANHOLE COVER LEVELS ARE TO CONFORM WITH FINISHED ROAD AND PATH LEVELS
  - WHERE COVER TO PIPE IS LESS THAN 1200mm (ROAD/PATH/VERGE) OR 900mm (OPEN SPACE) SURROUND PIPE IN MINIMUM 150mm CONCRETE



SCALE: H 1:500, V 1:100. DATUM: 43.000

COVER LEVEL		49.610		50.238		50.953		50.545		47.823		47.921		47.709				
INVERT LEVEL		47.020	1.000	46.743	1.001	46.639	1.002	46.420	1.003	46.390	1.004	46.050	1.005	45.940	1.006	45.770	45.740	47.709
DEPTH (m)		2.590		3.495		4.314		4.125		4.145		1.773		1.381		4.339		
DISTANCE (m)			27.10		10.15		21.15		7.39		29.56		10.88		11.09			
PIPE SLOPE			1:98		1:98		1:97		1:185		1:90		1:99		1:50			
PIPE SIZE			225mm		225mm		225mm		225mm		225mm		225mm		225mm			



SCALE: H 1:500, V 1:100. DATUM: 45.000

COVER LEVEL		53.125		52.818		51.279		51.170		49.675		47.921
INVERT LEVEL		51.275	2.003	50.795	2.004	49.330	2.005	49.148	2.006	46.670	2.007	45.940
DEPTH (m)		1.850		2.023		2.049		2.022		3.005		1.981
DISTANCE (m)			47.93		34.14		27.20		51.93		43.80	
PIPE SLOPE			1:100		1:23		1:149		1:21		1:60	
PIPE SIZE			225mm		225mm		225mm		225mm		225mm	

KEY  
 - - - - - EXISTING GROUND PROFILE  
 \_\_\_\_\_ PROPOSED GROUND PROFILE

ORDNANCE SURVEY IRELAND LICENCE  
 No EN 0017917  
 © ORDNANCE SURVEY IRELAND  
 GOVERNMENT OF IRELAND

P2	22-11-21	FOR SHD APPLICATION	JVS	BK
P1	03-12-19	FOR ABP APPLICATION	JVS	BK
REV.	DATE	DESCRIPTION	BY	CHKD.
<b>PLANNING</b>				
DESIGNED	SPB	PREPARED	JVS	
DATE	OCT 2019	CHECKED	BK	

**DBFL**  
 Dublin Office Ormond House,  
 Upper Ormond Quay, Dublin 7, Ireland.  
 Phone +353 1 400 4000  
 Fax +353 1 400 4050

Waterford Office Unit 2, The Chandlery,  
 1-2 O'Connell Street, Waterford, Ireland.  
 Phone +353 51 339 550  
 Fax +353 51 844 913

DBFL Consulting Engineers email: info@dbfl.ie site: www.dbfl.ie

PROJECT  
**PROPOSED DEVELOPMENT AT CORNELSCOURT**

DRG. TITLE  
**LONGITUDINAL SECTIONS THROUGH FOUL SEWER**

CLIENT  
**CORNEL LIVING LIMITED**

SCALE AS SHOWN @A1 FILE REF: 180208-DBFL-XX-XX-DR-C-3020  
 DRG. NO. **180208-DBFL-XX-XX-DR-C-3020** P2